

U22 Fukuoka Pattern



Oil Pattern Distance: 42 Feet **Reverse Brush Drop:** 42 Feet **Oil Per Board:** 40 uL
Forward Oil Total: 16.56 mL **Reverse Oil Total:** 14.04 mL **Volume Oil Total:** 30.6 mL
Forward Boards Crossed: 414 Boards **Reverse Boards Crossed:** 351 Boards **Total Boards Crossed:** 765 Boards

| | Start | Stop | Loads | Speed | Crossed | Start | End | Feet | T.Oil |
|---|-------|------|-------|-------|---------|-------|------|------|-------|
| 1 | 7L | 7R | 5 | 14 | 135 | 0.0 | 7.9 | 7.9 | 5400 |
| 2 | 8L | 8R | 3 | 14 | 75 | 7.9 | 13.8 | 5.9 | 3000 |
| 3 | 9L | 9R | 3 | 14 | 69 | 13.8 | 19.7 | 5.9 | 2760 |
| 4 | 10L | 10R | 3 | 14 | 63 | 19.7 | 25.6 | 5.9 | 2520 |
| 5 | 12L | 10R | 2 | 18 | 38 | 25.6 | 30.7 | 5.1 | 1520 |
| 6 | 14L | 10R | 2 | 18 | 34 | 30.7 | 35.8 | 5.1 | 1360 |
| 7 | 14L | 10R | 0 | 26 | 0 | 35.8 | 42.0 | 6.2 | 0 |

◀ ▶ ⏪ ⏩ Forward Reverse More

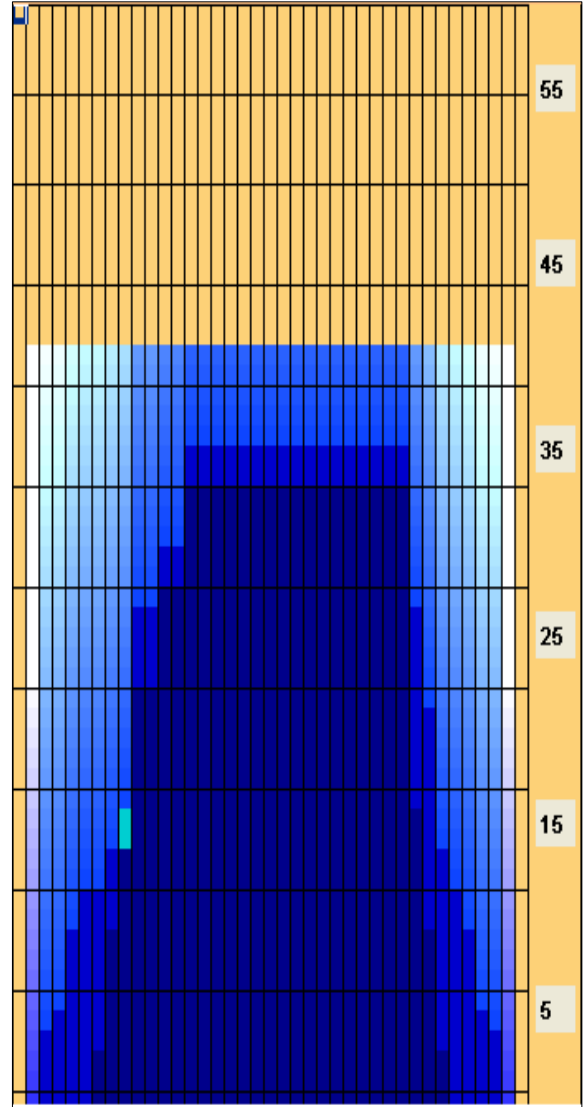
| | Start | Stop | Loads | Speed | Crossed | Start | End | Feet | T.Oil |
|----|-------|------|-------|-------|---------|-------|------|------|-------|
| 1 | 2L | 2R | 0 | 22 | 0 | 42.0 | 37.0 | -5.0 | 0 |
| 2 | 14L | 10R | 2 | 18 | 34 | 37.0 | 31.9 | -5.1 | 1360 |
| 3 | 12L | 10R | 1 | 18 | 19 | 31.9 | 29.4 | -2.5 | 760 |
| 4 | 10L | 9R | 2 | 18 | 44 | 29.4 | 24.3 | -5.1 | 1760 |
| 5 | 10L | 8R | 3 | 18 | 69 | 24.3 | 16.7 | -7.6 | 2760 |
| 6 | 8L | 7R | 1 | 14 | 26 | 16.7 | 14.8 | -1.9 | 1040 |
| 7 | 6L | 6R | 1 | 14 | 29 | 14.8 | 12.9 | -1.9 | 1160 |
| 8 | 5L | 5R | 2 | 14 | 62 | 12.9 | 9.0 | -3.9 | 2480 |
| 9 | 4L | 4R | 1 | 10 | 33 | 9.0 | 7.6 | -1.4 | 1320 |
| 10 | 3L | 3R | 1 | 10 | 35 | 7.6 | 6.2 | -1.4 | 1400 |
| 11 | 2L | 2R | 0 | 10 | 0 | 6.2 | 0.0 | -6.2 | 0 |

◀ ▶ ⏪ ⏩ Forward Reverse More

Conditioner: PRODIGY MV
Cleaner: DEFENCE-C

Conditioner:
 Type In or Select One
TransferType:
 Type In or Select One

- Forward
- Reverse
- Combined
- Buff



| Item | 3L-7L:18L-18R | 8L-12L:18L-18R | 13L-17L:18L-18R | 18L-18R:17R-13R | 18L-18R:12R-8R | 18L-18R:7R-3R |
|------------------|----------------------|---------------------|---------------------|----------------------|---------------------|----------------------|
| Description | Outside Track:Middle | Middle Track:Middle | Inside Track:Middle | Middle: Inside Track | Middle:Middle Track | Middle:Outside Track |
| Track Zone Ratio | 7.27 | 1.47 | 1.03 | 1 | 1.19 | 6.96 |

